

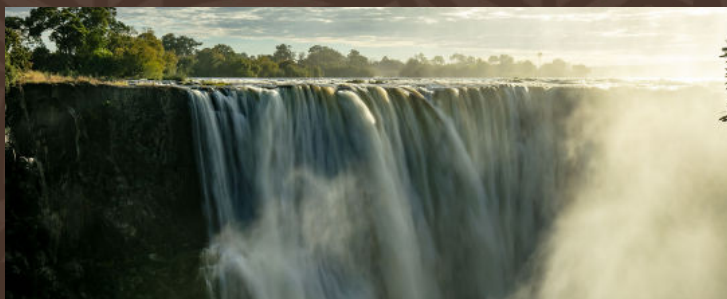


MO·AFRIKA
TOURS

5-DAY SHEARWATER EXPLORER VILLAGE LODGE MID-RANGE TOUR

VICTORIA FALLS

Imagine arriving to warm air and stunning Victoria Falls views at Shearwater Explorer Village, where top-notch service, delicious cuisine, and breathtaking vistas await. With the Falls nearby, you might enjoy a refreshing morning rain shower from the spray. The lodge's convenient location near entertainment and craft shops contrasts with its serene view of African wilderness and a popular waterhole for elephants and buffalo. Your safari features a guided rainforest walk and an exciting full-day Chobe National Park trip, including a luxurious boat cruise on the Chobe River. This carefully planned 5-day mid-range tour guarantees moments of wonder and delight throughout.



COST

Standard Chalets

From \$835 per person sharing

From \$1 040 per single traveller

Deluxe Chalets

From \$925 per person sharing

From \$1 150 per single traveller

Prices valid for 2025 | Subject to change | Peak Season Rates may Apply
Children's Rates available on request

DURATION

5 Days/ 4 Nights

INCLUDED

- 4 Nights' accommodation at Shearwater Explorer Village
- 4 Breakfasts at Shearwater Explorer Village
- All transfers between airport and Shearwater Explorer Village
- All meals as per itinerary
- Transfers to Chobe
- Game drive in Chobe
- Boat cruise and lunch on Chobe day trip.

EXCLUDED

- Optional activities on free days and afternoons
- Purchases of a personal nature
- Gratuities

HIGHLIGHTS

- Mid-range accommodation in a comfortable hotel close to the Falls itself.
- A sunset cruise with dinner on the mighty Zambezi River
- A guided morning walk through the vibrant rainforest at the Falls' edge.
- A full day trip to the Chobe National Park, including game drives and game viewing cruise along the scenic Chobe River.



VOTED NUMBER 1
TOUR OPERATOR
IN SA



2500+ REVIEWS



TERMS & CONDITIONS
APPLY



Please Like, Share & Follow

ACCOMMODATION

The hotel's location is unquestionably one of the most important advantages, but there are also wonderful gardens that are home to a wonderful birdlife, wonderful atmosphere and cuisine, and genuine value for the money. You will be spoilt rotten from the moment you arrive until the moment you leave. Get ready to be picked up by our airport transfer. Enjoy your stay at the contemporary and chic hotel. Have a meal at one of the restaurants or cafes. Experience the offered safaris and other exciting excursions... Accommodation at Shearwater Explorer Village comprises 54 deluxe rooms, 42 standard rooms and also offers some serviced camping facilities.

ITINERARY

1 On the first day of your tour, a guide will pick you up from the airport and transfer you to Shearwater Explorer Village. You will have some time to unwind and then set off on a beautiful sunset cruise on the vast Zambezi River. A gourmet dinner is waiting beneath the velvet African sky as the stars start to glimmer. Savour regional specialties while exchanging tales and chuckles beneath a million stars. You enter a state of complete ecstasy as the boat's soft sway and the river's rhythmic song soothe you.

2 Rise early to a promising morning and breakfast. Join your guide for a rainforest walk by the Falls, bask in the filtered sunlight, and return invigorated. You will be free in the afternoon to reminisce about the exhilarating morning or indulge in some OPTIONAL exciting adventures like:

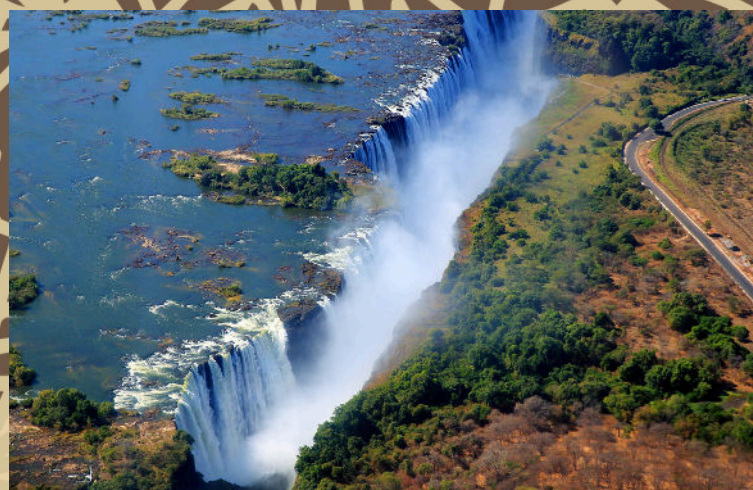
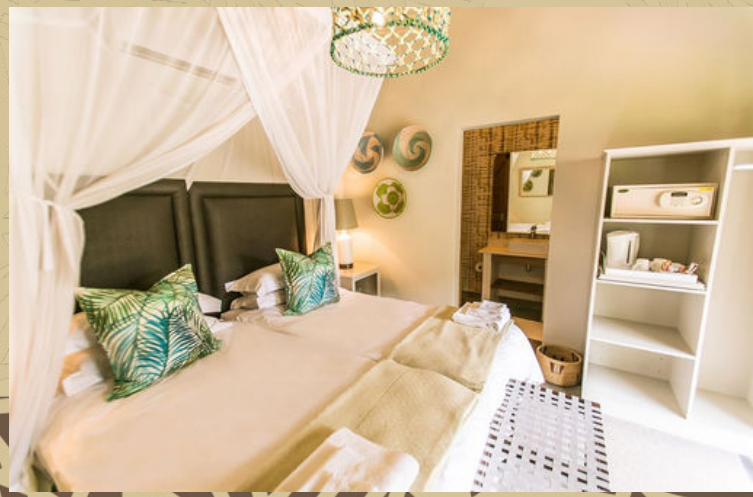
- Helicopter tour over Victoria Falls
- Bungee jump from the Falls Bridge
- Tandem gorge swing/zip line
- Cultural village visit
- Devil's Pool plunge (dry months)
- Dinner, dance, drumming

Many adventures await at Victoria Falls!

3 After breakfast, you will depart on a Chobe full day trip. This is one of the top places in the world to search for wild animals. Guests are transferred to the Kazungula border post, where they will be welcomed by a Botswana guide. Spend an unforgettable morning cruising along the scenic Chobe River. You will return to a tasty lunch at a pleasant riverbank hotel. After lunch, guests will be taken on a game drive within the Chobe National Park to enjoy ample wildlife encounters. The guests will then return to the Kazungula Border and their guide will escort them back to their hotel at roughly 18:30.

4 Following breakfast, you will be free today to relax, or indulge in some more optional adventures like: bungee jumping, tandem gorge swing and a zip line experience.

5 After breakfast, you can decide to spend your last day at Victoria Falls at leisure or indulge in any of the above or similar activities which you may not have been able to fit in the previous day. When it is time, you will be transferred back to the airport for your departing flight.





CONTACT US

MoAfrika Tours and its service providers offer cost effective group tours and transfers ranging from 2 – 12 persons per vehicle, please do inform us if you would prefer a private tour (additional rates may apply).

Bookings:	Lavender	+27 72 783 9787
	Rishen	+27 61 968 3402
Operations:	Tumi	+27 63 682 9961
Emergency:	Anthony	+27 82 506 9641

MoAfrika Team

