



# 3-DAY SUNDOWN COUNTRY ESTATE HOTEL TOUR

## PILANESBERG GAME RESERVE

Pilanesberg Game Reserve is a renowned safari location in South Africa. It is a malaria-free safari area known for its high concentration of wild animals and the Big Five. Sundown Country Estate Hotel offers a tranquil retreat in the Pilanesberg region, just 12 kilometers from the Sun City Resort. Enjoy a safari experience to Pilanesberg National Park, witnessing the Big Five and interacting with diverse range of birdlife. Enjoy gastronomic delights at Aloes Restaurant and The Sundown Restaurant, relax at the indoor bar or poolside bar, or bring out your adventurous side by taking part in one of our activities on offer like bush walks, archery, quad bike safaris and many more.

### DURATION

*3 Days/ 2 Nights*

### INCLUDED

- Transfers to and from the lodge in a luxury airconditioned vehicle
- 2x night's accommodation at Sundown Country Estate Hotel
- A quadbike safari
- 4 x 3-hour open vehicle safari game drives
- All meals as per itinerary
- Pilanesberg conservation levy

### EXCLUDED

- Purchases of a personal nature
- All beverages (cash bar available)
- Gratuities

### HIGHLIGHTS

- Mid-range lodge experience in Pilanesberg
- An exhilarating quadbike safari
- 4x game drives in a 10 seater open safari vehicle through Pilanesberg Game Reserve

### COST

*From R9 695 per person sharing  
From R11 895 per single traveller*

Prices valid for 2025 | Subject to change | Peak Season Rates may Apply | Children's Rates available on request



VOTED NUMBER 1  
TOUR OPERATOR  
IN SA



2500+ REVIEWS



TERMS & CONDITIONS  
APPLY



Please Like, Share & Follow

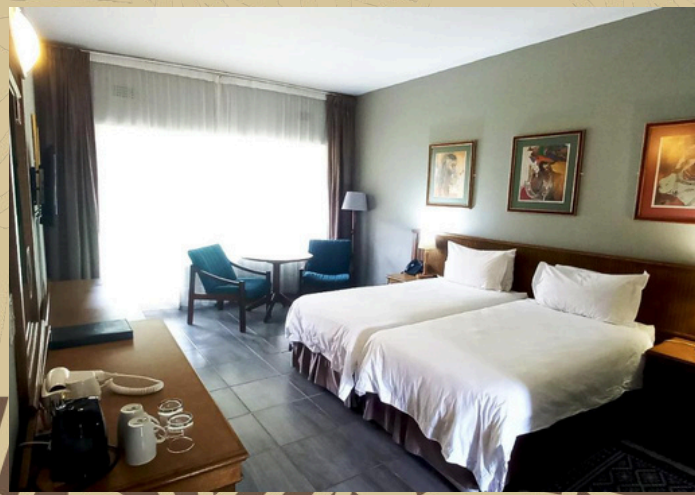


# ACCOMMODATION

Sundown Country Estate's accommodation includes air-conditioning, Internet TV, tea/coffee making facilities, mini-safes, hairdryers, and in-room telephones (communicate to the hotel reception or make an external phone call).

Sundown Country Estate provides further facilities like an outdoor swimming pool, free private parking, a fitness centre, and a garden. This property includes a shared lounge, a restaurant, a casino, and a terrace. The hotel offers evening entertainment and room service.

Sundown Country Estate's guest rooms include a private bathroom with a bath, a flat-screen TV, and air conditioning; some rooms also have a balcony.



# ITINERARY

**1** Your safari begins in Johannesburg and travels northwest toward the Pilanesberg National Park, where you should arrive by 09:00.

Your quad bike safari awaits. Until 11:30 you will explore the rugged terrain, wind through acacia groves, kick up dust, and feel the thrill of freedom as you track wildlife.

After this exhilarating ride, it's time to refuel. Lunch is served at the lodge, then enjoy time lounging by the pool.

As the sun dips low, you embark on our sunset safari in an open safari vehicle. An expert guide will point out any interesting sightings.

Back at the lodge, the aroma of a hearty dinner fills the air where many stories are shared around the campfire before going to bed.

**2** As the first rays of sunlight kiss the savannah, you step into the open safari vehicle for a sunrise game drive.

Back at the lodge, a hearty breakfast awaits when you can swap stories about the amazing sightings you've just seen.

By noon you can feast on a scrumptious lunch at a lodge restaurant before free time beckons. Perhaps you'll lounge by the pool, or maybe you'll prefer to wander along the nature trails.

As the sun begins its descent, you set off on another sunset safari to experience how the landscape transforms—the grasslands turn amber, and the sky blushes with hues of coral and lavender.

Back at the lodge, the aroma of dinner fills the air and while the Milky Way sprawls above. Enjoy some fine cuisine and soon it will be time for bed enjoying the lodge luxuries for the last time.

**3** Join your guide in the safari vehicle for a sunrise safari in the crisp air as the bush awakens.

Back at the lodge, a hearty breakfast awaits. After bidding farewell to your cosy abode, you have some options:

- another thrilling quad bike safari (R990)
- a leisurely bush walk (R350)
- soaking up the last moments in this wild paradise before departing for Johannesburg around noon.





# WHY CHOOSE MOAFRIKA TOURS?



## EXPERTISE

Our extensive knowledge and 2 decades of experience guarantee high-quality tours and unforgettable adventures.



## PERSONALISED ITINERARIES

We tailor safari experiences to individual preferences, offering a unique and customized journey.



## AFFORDABLE SCHEDULED TOURS

Our daily scheduled tours make exploring South Africa accessible for everyone. Our preselected tours highlight the best attractions and cities.



## 24/7 SUPPORT

Our offices are open around the clock, providing reliable assistance whenever needed.



## SATSA BONDED

As a 100% legal travel company, our SATSA bond ensures reliability and trust.



## QUALIFIED GUIDES

Our guides are well trained and hold all necessary qualifications to meet our clients' needs.



## SAFE AND RELIABLE VEHICLES

Our fleet meets all recommended passenger liability standards and has the necessary operational requirements.



## BENEFICIAL CONTRIBUTION

The funds from your journey remain in Africa continuing to support local communities and conservation efforts well beyond your return



## CONTACT US

MoAfrika Tours and its service providers offer cost effective group tours and transfers ranging from 2 – 12 persons per vehicle, please do inform us if you would prefer a private tour (additional rates may apply).

Bookings:	Lavender	+27 72 783 9787
	Rishen	+27 61 968 3402
Operations:	Tumi	+27 63 682 9961
Emergency:	Anthony	+27 82 506 9641

*MoAfrika Team*

ask@moafrikatours.com  
www.moafrikatours.com

@moafrikatours  
@moafrikatours



WHATSAPP  
+27 72 783 9787  
OR  
+27 61 968 3402  
TO BOOK



SCAN FOR  
TERMS &  
CONDITIONS



SCAN TO  
BROWSE  
PACKAGES