



MO·AFRIKA
TOURS

5-DAY KAPAMA RIVER LODGE FLY-IN SAFARI

KAPAMA PRIVATE GAME RESERVE

When you purchase a 5-day Kapama Fly-in Safari, you can save long road transfers. Fly into Hoedspruit Eastgate Airport from Cape Town or Johannesburg and be met by your friendly guide for transport to Kapama River Camp.

Arrive at your exclusive lodge in time for coffee and light snacks before departing on your first game drive in the Greater Kruger National Park's Kapama reserve. Sightings of the fabled Big-5 and other animals are common, and rival the sightings found at the famous Sabi Sands.

Your stay includes luxury accommodations, all meals, drinks (soft drinks and alcoholic beverages), and exceptional service. Kapama River Lodge is a festive and social safari lodge ideal for couples, families, and groups of friends.



DURATION

5 Days/ 4 Nights

INCLUDED

- Flights to and from Hoedspruit Eastgate Airport – rates will differ depending on the flight prices and origin of the flight
- 4 Nights Luxury 5-Star accommodation at Kapama River Camp
- All meals as per itinerary
- Return transfers from/to Hoedspruit Eastgate Airport
- Park fees

EXCLUDED

- Expenses of a personal nature
- Family Suite excludes flights

HIGHLIGHTS

- 4x morning and 4x afternoon game drives through Kapama Game reserve
- Big 5 off-road game viewing



VOTED NUMBER 1 TOUR OPERATOR IN SA



2500+ REVIEWS



TERMS & CONDITIONS APPLY



Please Like, Share & Follow

ACCOMMODATION

The exclusive River lodge is found within Kapama Game Reserve and provides the ideal combination of luxurious accommodations and a generous bed capacity with its 64 guestrooms.

This contemporary private wildlife lodge is located in the Greater Kruger National Park region, and it features a spectacular background provided by the northern Drakensberg mountain range.

Every one of the roomy accommodations comes equipped with a complete private bathroom and offers unobstructed views of the Big Five game reserve, which is known for its abundance of animals.

A swimming pool, a lounge, a bar, a library, a curio shop, a versatile function space, and a boma are all included in the core guest entertainment areas.

The meals are served in the form of a buffet, and there is a wide selection of freshly prepared pan-African foods available.

ITINERARY

1 Guests can fly into Hoedspruit Eastgate Airport from either Cape Town or Johannesburg. We will also meet you at Eastgate for transportation to and from Kapama Game Reserve. You have plenty of time to freshen up and eat before embarking on an afternoon game drive inside the reserve with your ranger and tracker.

You will stop for a sundowner along the way and have the opportunity to stretch your legs while watching the sun set over the distant Drakensberg mountains. The nocturnal animals of the jungle emerge as dusk approaches. A variety of unique species may be noticed on the way back to the resort at night. The skilled tracker will sweep the landscape with a flashlight that illuminates animal eyes.

Arrival at the lodge is usually around 19:00, in time for a delicious lunch. Your accommodation is arranged and provided at Kapama River Camp.

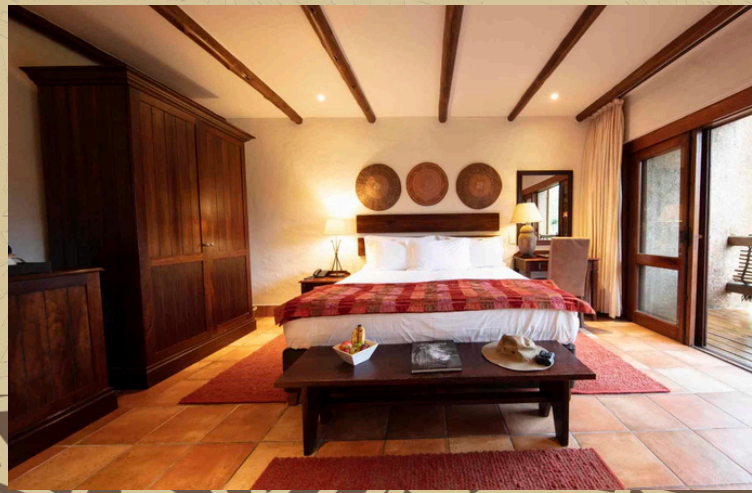
2-4 Today you will rise between 5:00 and 05:30 for tea or coffee and rusks before setting off on a morning game drive. Because of the reserve's lower temperatures, wildlife is often more active in the morning, and the softer light allows for good photography.

After a filling breakfast at the lodge, you will have time to relax by the pool, read a good book, and take advantage of the rest of the lodge's services.

Following a magnificent high tea, you will embark on an afternoon wildlife drive that may last past nightfall; the day will invariably culminate with a delectable dinner and a discussion of the day's sightings. Accommodation provided at Kapama River Camp.

5 The final day of your safari will begin with an early morning wildlife drive and, hopefully, some unforgettable sightings.

After the drive, you will have breakfast at your resort before being transferred to the Eastgate airport for your return flight.



WHY CHOOSE MOAFRIKA TOURS?



EXPERTISE

Our extensive knowledge and 2 decades of experience guarantee high-quality tours and unforgettable adventures.



PERSONALISED ITINERARIES

We tailor safari experiences to individual preferences, offering a unique and customized journey.



AFFORDABLE SCHEDULED TOURS

Our daily scheduled tours make exploring South Africa accessible for everyone. Our preselected tours highlight the best attractions and cities.



24/7 SUPPORT

Our offices are open around the clock, providing reliable assistance whenever needed.



SATSA BONDED

As a 100% legal travel company, our SATSA bond ensures reliability and trust.



QUALIFIED GUIDES

Our guides are well trained and hold all necessary qualifications to meet our clients' needs.



SAFE AND RELIABLE VEHICLES

Our fleet meets all recommended passenger liability standards and has the necessary operational requirements.



BENEFICIAL CONTRIBUTION

The funds from your journey remain in Africa continuing to support local communities and conservation efforts well beyond your return



CONTACT US

MoAfrika Tours and its service providers offer cost effective group tours and transfers ranging from 2 – 12 persons per vehicle, please do inform us if you would prefer a private tour (additional rates may apply).

Bookings:	Lavender	+27 72 783 9787
	Rishen	+27 61 968 3402
Operations:	Tumi	+27 63 682 9961
Emergency:	Anthony	+27 82 506 9641

MoAfrika Team

COST

JOHANNESBURG FLY IN

5TH JAN 2025- 30TH JUNE 2025

COURT YARD SUITE

From R51 900 per person sharing

From R72 900 per single traveller

DELUXE SUITES AND SPA SUITES

From R57 900 per person sharing

From R81 900 per single traveller

ROYAL SUITES

From R75 900 per person sharing

From R108 900 per single traveller

FAMILY SPA SUITES R144 000

1ST JULY 2025- 19TH DEC 2025

COURT YARD SUITE

From R54 700 per person sharing

From R77 100 per single traveller

DELUXE SUITES AND SPA SUITES

From R61 900 per person sharing

From R87 900 per single traveller

ROYAL SUITES

From R79 900 per person sharing

From R114 900 per single traveller

FAMILY SPA SUITES R156 000

CAPE TOWN FLY IN

5TH JAN 2025- 30TH JUNE 2025

COURT YARD SUITE

From R58 400 per person sharing

From R79 400 per single traveller

DELUXE SUITES AND SPA SUITES

From R64 400 per person sharing

From R88 400 per single traveller

ROYAL SUITES

From R82 400 per person sharing

From R115 400 per single traveller

FAMILY SPA SUITES R144 000

1ST JULY 2025- 19TH DEC 2025

COURT YARD SUITE

From R61 200 per person sharing

From R83 600 per single traveller

DELUXE SUITES AND SPA SUITES

From R68 400 per person sharing

From R94 400 per single traveller

ROYAL SUITES

From R86 400 per person sharing

From R121 400 per single traveller

FAMILY SPA SUITES R156 000

**Rates include a fixed budget for flights during this tour. Flights may cost more, depending on travel dates. If so, your quote will reflect this.*

Prices valid for 2025 | Subject to change | Peak Season Rates may Apply
Children's Rates available on request



ask@moafrikatours.com

www.moafrikatours.com

@moafrikatours

@moafrikatours



WHATSAPP

+27 72 783 9787

OR

+27 61 968 3402

TO BOOK



SCAN FOR
TERMS &
CONDITIONS



SCAN TO
BROWSE
PACKAGES