



12 DAY SELF-DRIVE NORTHERN NAMIBIA SAFARI

NAMIBIA

The 12 Day Namibia Highlights Safari offers an unforgettable journey through the country's most iconic destinations. Explore the striking red dunes of Sossusvlei, the charming coastal town of Swakopmund with its German colonial architecture and adventure activities, and the rugged landscapes of Damaraland, home to desert-adapted wildlife. Conclude with thrilling game drives in Etosha National Park, one of Africa's premier wildlife reserves. This carefully crafted itinerary blends Namibia's breathtaking landscapes, rich culture, and extraordinary wildlife into a truly memorable adventure.

DURATION

12 Days/ 11 Nights

INCLUDED

- Toyota Fortuner 4x4 or similar
- Accommodation as per Itinerary
- Meals as per Itinerary
- 11 Nights Accommodated
- Etosha Game Drive

EXCLUDED

- Fuel
- Entrance Fees
- GPS (If Available)
- Restaurant Meals as indicated
- Visa's
- Curios and Gratuities
- Optional Excursions and Activities not in itinerary
- Beverages

HIGHLIGHTS

- Sossusvlei
- Swakopmund
- Cape Fur Seals and the Skeleton Coast
- Twyfelfontein Rock Engravings
- The Etosha National Park



COST

From R90 350 per solo traveller
From R66 250 per person sharing
From R16 300 per single supplement
**Single supplement applies to a single occupant in a room*
From R19 800 per child

Prices valid for 2026 | Subject to change | Peak Season Rates may Apply



★★★★★
**VOTED NUMBER 1
 TOUR OPERATOR
 IN SA**



★★★★★
2500+ REVIEWS



**TERMS & CONDITIONS
 APPLY**



Please Like, Share & Follow

ACCOMMODATION

Experience a blend of history, luxury, and comfort with our selection of accommodations, each uniquely designed to enhance your stay. From elegantly restored buildings to cozy chalets with stunning views, you'll find inviting spaces with modern amenities and personalized service. Enjoy vibrant settings with family-friendly options, gourmet dining, and opportunities for adventure, all while immersing yourself in the rich natural beauty and cultural heritage of the area.

**MoAfrika Tours reserves the right to amend the published accommodation in the itinerary at any time due to availability at the time of booking*

ITINERARY

1

Upon your arrival at Hosea Kutako International Airport, a friendly Car Hire representative will greet you and assist with your transfer to the Car Hire office. There, you will receive a detailed briefing and collect your rental vehicle, ready for your Namibian safari adventure. At the Car Hire office, a MoAfrika Tours representative will meet you to go over your Namibia safari itinerary and provide clear directions to your first night's accommodation. Please note that dinner this evening is not included. You may enjoy a meal at your accommodation or explore a variety of excellent restaurants in the city.

2

Departing Windhoek at 8 am, you begin your journey southward, leaving the city behind as you travel through the picturesque cattle farming regions. The road takes you through Nauchas, where the landscape begins to shift, hinting at the arid beauty of the Namib Desert ahead. Pausing at the top of the Spreetshoogte Pass, one of Namibia's most scenic viewpoints, to admire the breathtaking panorama of the desert stretching endlessly below—a perfect moment to capture photographs or simply enjoy the serenity of the surroundings. Descending the steep pass, soon arriving at Solitaire, a charming and remote rest stop known for its quirky character and welcoming atmosphere. Here, you can stretch your legs, grab a refreshment, or sample the famous apple crumble pie that has become a must-try treat for travellers in the area. From Solitaire, we continue the final 80 km toward Sesriem, where our lodge awaits. Arriving in the afternoon, you'll have time to unwind and take in the tranquil desert environment, preparing for the adventures ahead.

3

Start your day with a pre-dawn wake-up for what promises to be the highlight of your journey. Depart the lodge just before sunrise to reach the park gates as they open, allowing you to enjoy the cooler morning temperatures during your exploration. Drive the 54 km into the iconic Dune Sea, passing the famous Dune 45, and continue to the 4x4 parking area. Here, engage 4x4 mode to navigate the final 5 km of sandy terrain leading to Deadvlei. At Deadvlei, marvel at the surreal landscape of 900-year-old fossilised trees set against a backdrop of bright white clay, deep orange dunes, and vibrant blue skies—perfect for photography (though be mindful not to touch the ancient trees). Adventurers can challenge themselves with a climb up one of the towering dunes, reaching up to 355 meters, to enjoy sweeping views of the desert. Running down the soft slip face back into Deadvlei adds a playful touch to the experience. Afterward, continue a short distance to Sossusvlei, where you can explore the shifting sands and, during the rainy season, witness the area transform into a lush oasis teeming with birdlife and wildlife. As the day warms, return to the lodge for a late lunch and some well-deserved relaxation. In the afternoon, take a leisurely visit to Sesriem Canyon, a fascinating natural wonder shaped by centuries of erosion, before winding down for the evening at your own pace.

4

Today's journey offers a breathtaking transition from the arid Namib Desert to the refreshing Atlantic coast. Departing at 8:00 AM, you'll have ample time to enjoy scenic stops along the way, making the journey as memorable as the destination. Your first stop is Solitaire again, just 83 km into the drive, famed for its legendary apple crumble pie—a treat not to be missed. The quirky surroundings also provide excellent photo opportunities. Continuing on the C14, pause to admire iconic landmarks such as the Tropic of Capricorn, the Gaub Pass, and the Kuiseb Pass, each showcasing stunning desert vistas. Reach Walvis Bay by early afternoon and stop at the Walvis Bay Yacht Club to plan tomorrow's activities. Consider options like a dolphin boat cruise, an adventurous 4x4 excursion to Sandwich Harbour, or a combination of both—Catamaran Charters is highly recommended for an unforgettable experience. From Walvis Bay, a short 35 km coastal drive brings you to Swakopmund, where you'll settle into your guesthouse for a two-night stay. This charming coastal town boasts excellent dining options, with the Jetty Restaurant being a standout choice. Be sure to reserve a table in advance for a memorable evening by the sea.

5

Today is yours to enjoy at your leisure in Swakopmund, a delightful coastal holiday town brimming with attractions. You can explore the craft market, admire the stunning exhibits at the Crystal Gallery, take a stroll along the historic Jetty, or visit the Aquarium. For a more laid-back day, relax on the safe and serene beaches or savour the town's diverse culinary scene. For a touch of adventure, consider a dolphin cruise or a guided tour to Sandwich Harbour in nearby Walvis Bay—both offer unforgettable experiences amidst stunning natural beauty. Meals are at your own expense, with excellent dining options such as The Brauhaus, The Tug, or Blue Grass providing a variety of delicious choices.

6

Heading north along the scenic Atlantic coastline, today's journey is a lengthy drive and is filled with fascinating stops and natural wonders. Our first stop is at the unique lichen fields just north of Henties Bay, where you can admire the delicate, slow-growing lichens thriving in this arid environment. These hardy organisms are a testament to nature's ability to adapt and survive in extreme conditions. Continuing up the Skeleton Coast, we visit the Cape Cross Seal Colony, home to thousands of Cape fur seals. This remarkable site is made possible by the nutrient-rich waters of the Benguela Current, which provide an abundant food supply and a safe haven for these marine mammals. As we move along the coast, we encounter the eerie yet intriguing Benguela Eagle shipwreck, a reminder of the many vessels claimed by the treacherous conditions of the Skeleton Coast. Nearby, the old oil rig stands as another haunting symbol of the region's history, blending industrial remnants with the stark beauty of the surrounding desert. Turning inland, we make a stop to see the Welwitschia mirabilis, an ancient plant unique to Namibia and Angola. These fascinating plants can live for over a thousand years and are a botanical highlight of the region. By late afternoon, we arrive at our lodge in the heart of Damaraland, where you can relax and reflect on the day's incredible discoveries.

7

After an early morning breakfast, we set off for the short drive to the world-renowned Twyfelfontein, home to the famous Bushman rock engravings. A local guide will take you through this UNESCO World Heritage Site, where you'll explore the largest concentration of petroglyphs in the world. These ancient engravings, dating back between 2,000 and 10,000 years, offer a fascinating glimpse into the culture and beliefs of the San people. After a leisurely walk through Twyfelfontein, we continue toward Etosha National Park, with a brief stop at the Petrified Forest along the way. Estimated to be 280 million years old, this remarkable site features ancient tree trunks, remnants of a long-lost forest, which have been transformed into stone over millennia by the forces of nature. We arrive at our lodge in the late afternoon, where you can unwind with a refreshing swim before enjoying an early dinner.



8

Today is dedicated to a full-day safari adventure through the western reaches of Etosha National Park, one of Southern Africa's most celebrated wildlife sanctuaries. After an early breakfast, we head out in open safari vehicles, perfect for both photography and spotting wildlife, and begin our journey deep into the park. This region is known for its scenic waterholes, and much of the day is spent exploring these vital gathering spots. We'll make frequent stops at well-known pans and springs such as Okaukuejo, Ombika, Olifantsbad, and others in search of wildlife that may have eluded us the day before. Each waterhole offers a unique scene—sometimes serene, sometimes dramatic—as animals come and go throughout the day. Etosha is home to a stunning diversity of game, and sightings often include large herds of Springbok, Plains Zebra, and Blue Wildebeest roaming across the vast savannah. Keep an eye out for Giraffe, Kudu, and Oryx, as well as more elusive species like the Black-backed Jackal or Honey Badger. As we navigate the expansive plains and woodland fringes, there's also a good chance of encountering Elephants, often seen dust bathing or drinking in large family groups. Of course, no Etosha safari is complete without the hope of spotting the park's big predators—especially Lion and, if we're lucky, the critically endangered Black Rhino, which is often sighted around the western waterholes, particularly in the early morning or late afternoon. Midday, we pause in a shaded picnic area to enjoy packed lunches surrounded by the wild beauty of Etosha. It's a great time to stretch your legs, refuel, and take in the sights and sounds of the bush. We continue our game viewing into the afternoon, covering new areas and returning to favorite waterholes for a final chance at any missed sightings. Eventually, we make our way back to the lodge by late afternoon, where you can cool off with a refreshing swim in the pool or relax with a well-earned drink as the sun sets.

9

Today is dedicated to a full day of exploration within Etosha National Park, allowing you to move at your own pace as you journey from the Anderson Gate in the south to the Von Lindequist Gate in the east. Along the way, take time to stop at a variety of watering holes—each offering a unique opportunity to observe the diverse wildlife that thrives in this remarkable environment. Midday, enjoy a relaxed lunch at the Halali Rest Camp, with meals available at your own expense. Afterward, continue your drive through the park, perhaps pausing to admire the expansive views from the edge of the iconic Etosha Pan—one of Africa's largest salt pans and a striking feature of the landscape. In the late afternoon, make your way toward Namutoni Rest Camp, an area known for its vibrant wildlife activity and excellent game-viewing opportunities. From here, exit the park via the Von Lindequist Gate and take a short drive to Mokuti Lodge. Here, you can settle in, relax, and enjoy a peaceful evening in the heart of the African bush.

10

Departing Onguma at 8:00 am, travel east along the B1, passing by Otjikoto Lake and the historic Tsumeb Copper Mine. Continue south on the B1 through the towns of Otavi and Otjiwarongo, arriving at Otjiwa in the mid-afternoon. Otjikoto Lake, a deep sinkhole in northern Namibia, holds a fascinating slice of the region's history. During World War I, the lake was used to dispose of military equipment by German forces, including artillery and ammunition that were thrown into its depths to prevent capture by advancing troops. Over time, some of these historic pieces have been recovered and are now on display at the Tsumeb Museum, providing a glimpse into Namibia's military past and the strategic importance of the area during the war. The lake itself, with its striking turquoise waters and dramatic surroundings, remains a captivating site for both history enthusiasts and nature lovers alike.

11

Bidding farewell to Otjiwa, we head south along the B1 via Otjiwarongo back to Windhoek. Since today's drive is relatively short, consider enjoying a morning activity at Otjiwa before departing. Upon arrival in Windhoek, we check back into our hotel and settle in for the evening. Dinner is at your own leisure, with a strong recommendation for Joe's Beerhouse — a lively and iconic spot often regarded as a must-visit for anyone completing a Namibian safari, offering a true taste of local cuisine and atmosphere.

12

Depending on your departure time, you will return your vehicle to the Car Hire office. Please remember to refuel the tank to avoid any extra charges. Once the handover is complete, the Car Hire company will arrange a transfer to the airport, ensuring you arrive in time for your flight.

WHY CHOOSE MOAFRIKA TOURS?



EXPERTISE

Our extensive knowledge and 2 decades of experience guarantee high-quality tours and unforgettable adventures.



PERSONALISED ITINERARIES

We tailor safari experiences to individual preferences, offering a unique and customized journey.



AFFORDABLE SCHEDULED TOURS

Our daily scheduled tours make exploring South Africa accessible for everyone. Our preselected tours highlight the best attractions and cities.



24/7 SUPPORT

Our offices are open around the clock, providing reliable assistance whenever needed.



SATSA BONDED

As a 100% legal travel company, our SATSA bond ensures reliability and trust.



QUALIFIED GUIDES

Our guides are well trained and hold all necessary qualifications to meet our clients' needs.



SAFE AND RELIABLE VEHICLES

Our fleet meets all recommended passenger liability standards and has the necessary operational requirements.



BENEFICIAL CONTRIBUTION

The funds from your journey remain in Africa continuing to support local communities and conservation efforts well beyond your return



CONTACT US

MoAfrika Tours and its service providers offer cost effective group tours and transfers ranging from 2 – 12 persons per vehicle, please do inform us if you would prefer a private tour (additional rates may apply).

Bookings:	Lavender	+27 72 783 9787
	Rishen	+27 61 968 3402
Operations:	Tumi	+27 63 682 9961
Emergency:	Anthony	+27 82 506 9641

MoAfrika Team

ask@moafrikatours.com
www.moafrikatours.com

@moafrikatours
@moafrikatours



WHATSAPP
+27 72 783 9787
OR
+27 61 968 3402
TO BOOK



SCAN FOR
TERMS &
CONDITIONS



SCAN TO
BROWSE
PACKAGES



MO•AFRIKA
T O U R S

NORTHERN NAMIBIA HIGHLIGHTS



ACCOMMODATION



SAFARI BOOKINGS
COMPASS TOUR OPERATORS & SAFARI TOURS
★★★★★
VOTED NUMBER 1
TOUR OPERATOR
IN SA

2023
Travelers' Choice

Tripadvisor
★★★★★
2500+ REVIEWS

**TERMS & CONDITIONS
APPLY**

Please Like, Share & Follow

THE VINEYARD

The Vineyard blends history, luxury, and charm, offering elegant accommodations in beautifully restored century-old buildings for a tranquil and memorable stay.

Twyfelfontein Lodge: Twyfelfontein Lodge features comfortable chalets with stunning views in Namibia. Guests enjoy amenities like a swimming pool and restaurant, along with guided tours to nearby rock engravings. It's a perfect spot for exploring the area's natural beauty and heritage.



CORNERSTONE GUESTHOUSE

Cornerstone Guesthouse in Windhoek offers a warm atmosphere with comfortable rooms and personalized service. Guests can enjoy a lovely garden and a hearty breakfast, all close to local attractions.



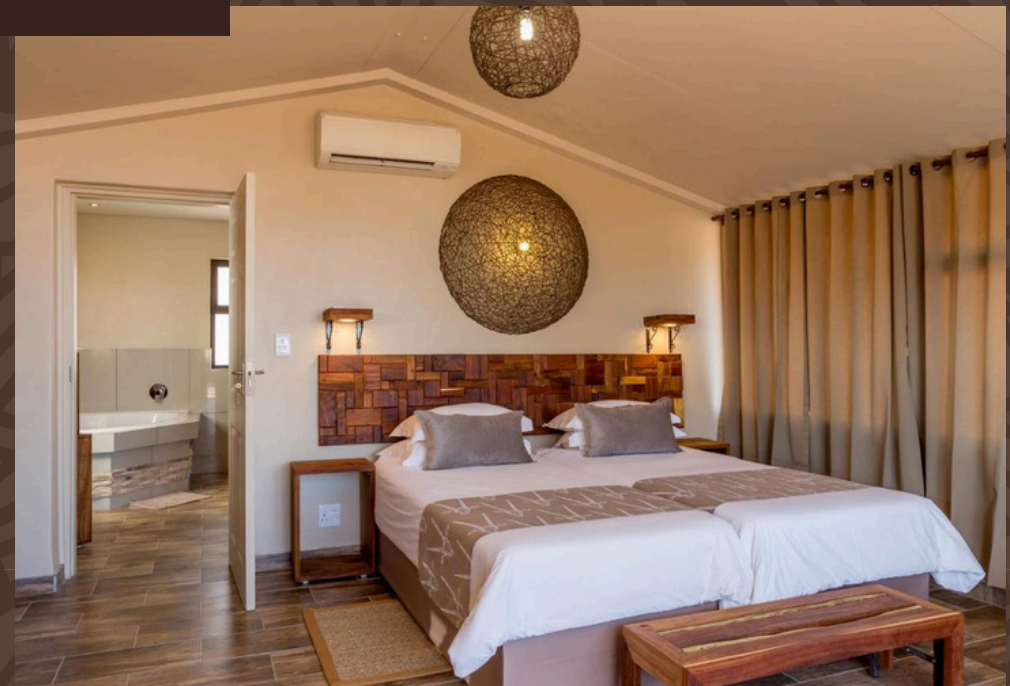
TWYFELFONTEIN LODGE

Twyfelfontein Lodge features comfortable chalets with stunning views in Namibia. Guests enjoy amenities like a swimming pool and restaurant, along with guided tours to nearby rock engravings. It's a perfect spot for exploring the area's natural beauty and heritage.



SOSSUSVLEI LODGE

Sossusvlei Lodge is conveniently located near the iconic dunes of Sossusvlei. With spacious accommodations and modern amenities, guests can relax after exploring the desert. The lodge features a restaurant and pool, making it an ideal base for adventure.



ask@moafrikatours.com
www.moafrikatours.com

@moafrikatours
@moafrikatours



WHATSAPP
+27 72 783 9787
OR
+27 61 968 3402
TO BOOK



SCAN FOR
TERMS &
CONDITIONS



SCAN TO
BROWSE
PACKAGES

TALENI ETOSHA VILLAGE LODGE

Family-friendly Taleni Etosha Village Lodge offers comfortable chalets in a lively setting. With a restaurant, bar, and easy park access, it's ideal for families and groups seeking adventure.



FRANS INDONGO LODGE

Combining luxury and cultural experiences, Frans Indongo Lodge showcases traditional Namibian architecture and offers gourmet dining, a pool, and engaging community activities.



ask@moafrikatours.com
www.moafrikatours.com

@moafrikatours
@moafrikatours



WHATSAPP
+27 72 783 9787
OR
+27 61 968 3402
TO BOOK



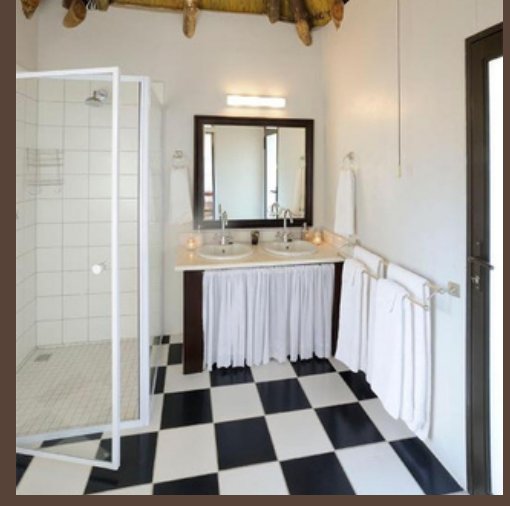
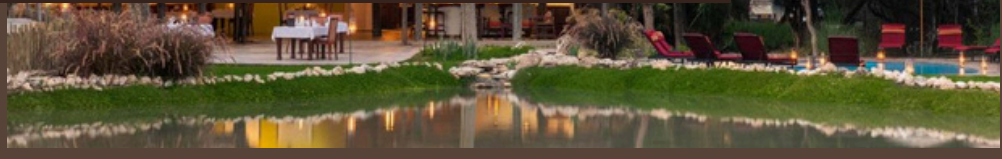
SCAN FOR
TERMS &
CONDITIONS



SCAN TO
BROWSE
PACKAGES

ONGUMA BUSH CAMP:

Onguma Bush Camp provides an authentic safari experience with luxurious accommodations. Guests can enjoy game drives, guided walks, and the vibrant sounds of the African bush.



ask@moafrikatours.com
www.moafrikatours.com

@moafrikatours
@moafrikatours



WHATSAPP
+27 72 783 9787
OR
+27 61 968 3402
TO BOOK



SCAN FOR
TERMS &
CONDITIONS



SCAN TO
BROWSE
PACKAGES