



MO•AFRIKA
T O U R S

6-DAY DUNES & WILDLIFE LODGE SAFARI

NAMIBIA



This fully accommodated and very comfortable safari may be short, but it is action-packed and packed with many of Namibia's best attractions. Game viewing in the world-renowned Etosha National Park, beautiful Damaraland and local tribal people. Namibia's highest mountain – The Brandberg and the forbidding Skeleton Coast with a shipwreck to see and photograph.

We spend time in the historic coastal town of Swakopmund, sampling the delights of the excellent restaurants and having the chance to participate in exciting activities in and around the coastal area.

The world's highest dunes in the world's oldest desert await visiting Deadvlei, Sossusvlei and Sesriem Canyon. A scenic drive up over the Khomas Hochland and central plateau brings us back to Windhoek at the journey's end of one of our most popular safaris.

**Please Note: MoAfrica Tours reserves the right to amend the published accommodation in the itinerary at any time due to availability at the time of booking*



DURATION

6 Days/ 5 Nights

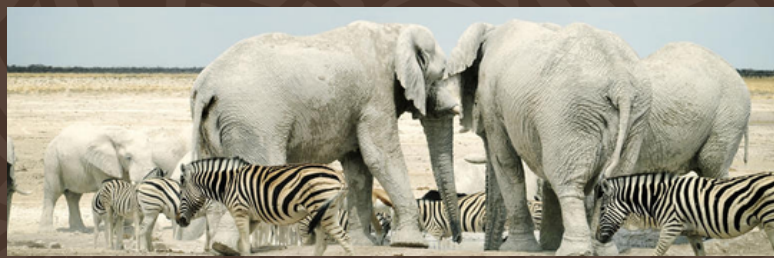
This tour departs every Tues & Thurs of the week

INCLUDED

- Transport in a custom-built safari vehicle
- Professional Guide
- 3 Nights Accommodation
- Meals as per Itinerary
- Park Fees
- Game Drive
- Airport Transfers

EXCLUDED

- Curios and Gratuities
- Flights and Visa Fees
- Meals not in Itinerary
- Personal Beverages
- Optional Activities



COST

From R39 500 per person sharing
From R4 500 per single supplement
From R36 500 per child (6-11 years)

Prices valid for 2026 | Subject to change | Peak Season Rates may Apply
Children's Rates available on request



VOTED NUMBER 1
TOUR OPERATOR
IN SA



2500+ REVIEWS



TERMS & CONDITIONS
APPLY



Please Like, Share & Follow

ITINERARY

1

You will be collected from your accommodation within the Windhoek city limits at 07:00 and transferred to Chameleon Headquarters for a short pre-departure meeting. Heading north from Windhoek, we stop briefly at the small town of Otjiwarongo to gather some last-minute supplies before continuing to Etosha, and we enjoy a light lunch pack whilst “on the move”. We enter Etosha National Park and embark on a game drive to our overnight accommodation within the park. Etosha is huge, spanning just over 22,000 square kilometres and home to 114 species of mammal, 350 species of bird, 110 species of reptile, countless numbers of insects, and, somewhat bizarrely, one species of fish. There are good chances of spotting many of these different creatures as we tour through the park, stopping at the various waterholes along our way. All visitors must be in camp by sunset. We aim to arrive at our lodge before sunset, allowing time to settle into our rooms, which feature en-suite bathrooms and tea/coffee facilities. Dinner at the camp restaurant is included in the price.

2

We have the whole day to explore Etosha in an open game viewer, and we want to make the most of it. Early morning is usually a productive time for game viewing, and first thing in the morning is a good time to catch big cats returning from the hunt. Etosha is a desert landscape, and water is the most scarce natural resource. There are, however, numerous waterholes here, both natural and man-made, and our game driving technique is to take in as many of these as possible. Here, we hope that the game will come to us as thirsty animals come for a much-needed drink.

On our way today, we will stop to have a closer look at the Etosha Pan. The name Etosha translates as ‘great white space’, but this name does not do justice to the immensity of the pan. Over 4,700 square km of dazzling white mineral pan, so big that it can be seen from space.

We exit Etosha at the Anderson gate, close to sunset, and it is just a short drive to our accommodation, which features a comfortable, spacious twin-share room with modern en-suite bathroom facilities. An ideal space to sit back, relax and enjoy the beauty that surrounds you. A buffet dinner tonight at your accommodation.



ITINERARY cont.

3

After breakfast, we aim to be on the road by 7:30 this morning. We are heading for the Skeleton Coast, and we are taking the scenic route. We first head south on the main road, passing the small town of Outjo, and then continue west, picking up the gravel road as we travel through the area known as Damaraland.

Damaraland is renowned for its stunning scenery, majestic mountains, vast open grasslands, and tall koppies (small hills) of rounded pink granite boulders, as well as its expansive landscapes and vast open spaces. We also have the opportunity to meet some of the locals, as there are several places along our route today where we can find informal shops selling locally made, handcrafted souvenirs. Represented here are ladies from the Himba, Herero, and Damara tribes, and most often, they are wearing their traditional attire. Here we can interact with some of the colourful local characters who live in this harsh environment. Making a small purchase here is a good way to inject some cash directly into the local economy. We continue through the beautiful landscape, making a stop for a light picnic lunch, under the shadow of Namibia's highest mountain, the Brandberg. Rising from the desert floor, this giant monolith is 2,573 m above sea level and is formed of pink-tinged granite.

We continue our journey west and soon arrive at the coast, where we encounter the chilly Atlantic Ocean. The whole coastline of Namibia is known as the Skeleton Coast, and it is easy to see why this barren seaboard is so named, with its forbidding mountains and barren beaches. The wind, the waves and the giant fog banks all conspire to push ships onto the beach. The countless mariners who, in olden times, found themselves shipwrecked here faced the stark prospect of no fresh water, no food, no rescue and a slow death by exposure. Their Shipmates who went down with their ship were thought to be the lucky ones.

Heading south on the coast road, our next stop is a more recent shipwreck. 15 km south of the small town of Henties Bay, a fishing trawler, The Zeila, was beached in 2008. She was an old vessel that had been sold for scrap and was under tow at the time. The cable snapped, and, like so many ships before her, she was caught in the swell and currents and ended up on the beach. She lies pretty close to the shore and is well-positioned for photos.

We complete the final leg of our journey to Swakopmund, check into our accommodation, and the centrally located hotel is easily explored on foot from our central location. Swakopmund was founded by Captain Kurt von François of the German Empire's imperial colonial army in 1892. (He also founded Windhoek in 1890). It is an interesting town to say the least, bounded to the north, the east and the south by the mighty dunes of the Namib Desert and to the west by the Atlantic Ocean. There are still many examples of colonial German architecture to be seen, and the German language remains widely spoken.



ITINERARY cont.

4

We have the option to have a more leisurely start this morning, as we are only leaving Swakopmund in the mid-morning.

If you choose not to have a lie-in, then Swakopmund offers many opportunities to keep us busy during our morning here. The town centre is small and easily explored on foot, but there are also many extra, optional activities available. For those with a love of adrenaline, quad biking and sandboarding are very popular if you fancy careening down the slip face of a dune at 60 km per hour. Our guide will discuss all the options with you in advance and will be able to facilitate any bookings that we would like to make.

Departing Swakopmund at 11h30, we head east into the desert. We first cross the Namib gravel plains, large areas of flat and seemingly barren terrain broken up by huge mountain inselbergs. We have two mountain passes to traverse this afternoon, the first is the mighty Kuiseb Pass, and we follow the road from the top of the hills, dropping steeply down into the canyon carved over aeons by the Kuiseb River on its way to debouch into the ocean at the port town of Walvis Bay. We climb up from the banks of the river and over the pass, travelling through the mountain peaks and on to the second, smaller canyon of the Gaub River, a tributary of the Kuiseb. We emerge from the mountains onto a flat road, and almost immediately we cross the Tropic of Capricorn at 23.5 degrees south. There is a signpost at this auspicious spot, and we stop along the road for photos.

From here, we continue through the desert landscape to the tiny town of Solitaire, where we can stretch our legs and continue to our accommodation. Overnight is in twin rooms with en-suite bathroom facilities. A pool and bar are available, as well as a buffet dinner tonight.

5

Getting into the dune area as early as possible this morning is the aim, and that means a pre-dawn start and a very early breakfast. As we are staying outside of the national park, we will enter the dune area as soon as the gate opens at sunrise.

The best time to photograph the dunes is around sunrise and sunset. This is when you can see towering dunes illuminated a glowing orange, apricot red on one side and swathed in shadow on the other. The depth of field is fantastic at this time of day. From Sesriem, we cover the 60 km into the dunes quickly and arrive at the 2x4 car park where all 2-wheel drive vehicles have to stop. From here, we enter the ancient Tsauchab River-bed for the last 5km leg to Sossusvlei itself.

The Tsauchab River is ephemeral; it only flows seasonally, when there is enough rain, and for the most part, the river-bed is dry. Aeons ago, during these rare floods, the Tsauchab sometimes received enough water to flow all the way to the Atlantic Ocean. However, as the millennia passed and the dune fields began to form (around five million years ago), wind-blown sand invaded the river-beds.



ITINERARY cont.

The rivers became increasingly constricted by sand until, eventually, the occasional floods could no longer break through the sand barriers that the wind had formed. The valley we drove along this morning to get here is kept free of sand by the Tsauchab, but Sossusvlei is now the permanent end of the water's reach.

Sossusvlei still occasionally floods (perhaps once every decade). After good rains in the Naukluft Mountains, where the river originates, Sossusvlei can become inundated, and the resulting lake can persist for many months. However, the river can no longer find its original path to the Atlantic. There is a 4x4 shuttle service that will transport us through the sandy terrain of the riverbed.

We will visit Dead Vlei, an ancient pan surrounded by dunes, which is strikingly populated with dead, skeletal camelthorn trees. These trees have been a feature of this landscape for over 1000 years. Dunes almost surround Sossusvlei; just one narrow path, kept open by the Tsauchab River, remains. We have time to explore the area on foot and to climb one of the highest dunes in the world, some towering 300 m above us; the views are breathtaking and justly famous.

We drive back the way we came (there is only one road), stopping at the iconic Dune 45 (so named as it is 45 km from Sesriem. There is time to climb Dune 45 if you still have energy, or a sit in the shade at the base of the dune will suffice.

Driving back to Sesriem, we take a short excursion to see the Sesriem Canyon. Only four km from Sesriem, this canyon has been carved out of the landscape by the Tsauchab River. Approximately two million years ago, a period of intense cold known as an ice age occurred in Europe. This caused glaciers to form and led to a global decline in sea level. The knock-on effect of this at Sesriem Canyon was that it increased the length and water flow of the Tsauchab River. This greater force of water allowed the Tsauchab to begin cutting through the terrain, resulting in the canyon we can see today. We can easily walk into the river-bed, it is usually much cooler in the canyon, and we can follow the river for some way along its journey to Sossusvlei. We head back to our accommodation in the late afternoon.

6

Today is our last day, but excitement is still on the menu. We head back to Solitaire, where our guide will get us a sample of the apple pie that has made this homestead famous.

There is some lovely mountain scenery on our drive back to Windhoek. The road climbs up onto and over Namibia's central plateau, and we return to Windhoek via the small community at BüellsPort and the small town of Rehoboth. We arrive mid-afternoon and will be dropped off at Chameleon Backpackers or the accommodation of our choice within Windhoek city limits.



WHY CHOOSE MOAFRIKA TOURS?



EXPERTISE

Our extensive knowledge and 2 decades of experience guarantee high-quality tours and unforgettable adventures.



PERSONALISED ITINERARIES

We tailor safari experiences to individual preferences, offering a unique and customized journey.



AFFORDABLE SCHEDULED TOURS

Our daily scheduled tours make exploring South Africa accessible for everyone. Our preselected tours highlight the best attractions and cities.



24/7 SUPPORT

Our offices are open around the clock, providing reliable assistance whenever needed.



SATSA BONDED

As a 100% legal travel company, our SATSA bond ensures reliability and trust.



QUALIFIED GUIDES

Our guides are well trained and hold all necessary qualifications to meet our clients' needs.



SAFE AND RELIABLE VEHICLES

Our fleet meets all recommended passenger liability standards and has the necessary operational requirements.



BENEFICIAL CONTRIBUTION

The funds from your journey remain in Africa continuing to support local communities and conservation efforts well beyond your return







CONTACT US

MoAfrika Tours and its service providers offer cost effective group tours and transfers ranging from 2 – 10 persons per vehicle, please do inform us if you would prefer a private tour (additional rates may apply).

Bookings:	Lavender	+27 72 783 9787
	Rishen	+27 61 968 3402
Operations:	Tumi	+27 63 682 9961
Emergency:	Anthony	+27 82 506 9641

MoAfrika Team

 ask@moafrikatours.com
 www.moafrikatours.com

 @moafrikatours
 @moafrikatours



WHATSAPP
+27 72 783 9787
OR
+27 61 968 3402
TO BOOK



SCAN FOR
TERMS &
CONDITIONS



SCAN TO
BROWSE
PACKAGES



MO•AFRIKA
T O U R S

HALALI



Halali is a tranquil rest camp in the center of Etosha National Park, nestled among mopane trees at the base of a dolomite hill. It features the Moringa waterhole, which is floodlit at night and attracts a variety of wildlife, including elephants, rhinos, and leopards. Halali offers a range of accommodations—from campsites to family and honeymoon chalets—along with facilities like a restaurant, bar, swimming pool, and guided game drives. Its name, derived from a German hunting term, reflects its peaceful, central location ideal for wildlife viewing.



VOTED NUMBER 1
TOUR OPERATOR
IN SA



**TERMS & CONDITIONS
APPLY**



Please Like, Share & Follow



MO•AFRIKA
T O U R S

OKAUKUEJO



Okaukuejo is a popular rest camp and tourist hub in Etosha National Park, Namibia. Located near the park's southern entrance, it is best known for its floodlit waterhole, where visitors can observe a variety of wildlife—such as elephants, rhinos, and lions—especially during the dry season. The camp offers accommodations ranging from basic rooms to luxury chalets, along with facilities like a restaurant, swimming pool, and fuel station. Okaukuejo also serves as the administrative center of the park and is an ideal base for game drives across the surrounding plains.



VOTED NUMBER 1
TOUR OPERATOR
IN SA



2500+ REVIEWS



TERMS & CONDITIONS
APPLY



Please Like, Share & Follow



MO•AFRIKA
T O U R S



TALENI ETOSHA VILLAGE



Taleni Etosha Village is a family-friendly lodge located just 2 km from Etosha National Park's Andersson Gate, making it an ideal base for exploring the park. The village offers 45 spacious, air-conditioned suites with en-suite bathrooms and private patios nestled among mopane trees, ensuring privacy and comfort. Facilities include three restaurant areas, a bar with a big-screen TV, two swimming pools plus a kiddie pool, and a well-stocked utility and curio shop. Guests can enjoy guided game drives into Etosha, nature walks, sundowner drives, and stargazing sessions. The lodge combines modern comfort with traditional African village style, providing an affordable yet stylish safari experience.



VOTED NUMBER 1
TOUR OPERATOR
IN SA



2500+ REVIEWS



TERMS & CONDITIONS
APPLY

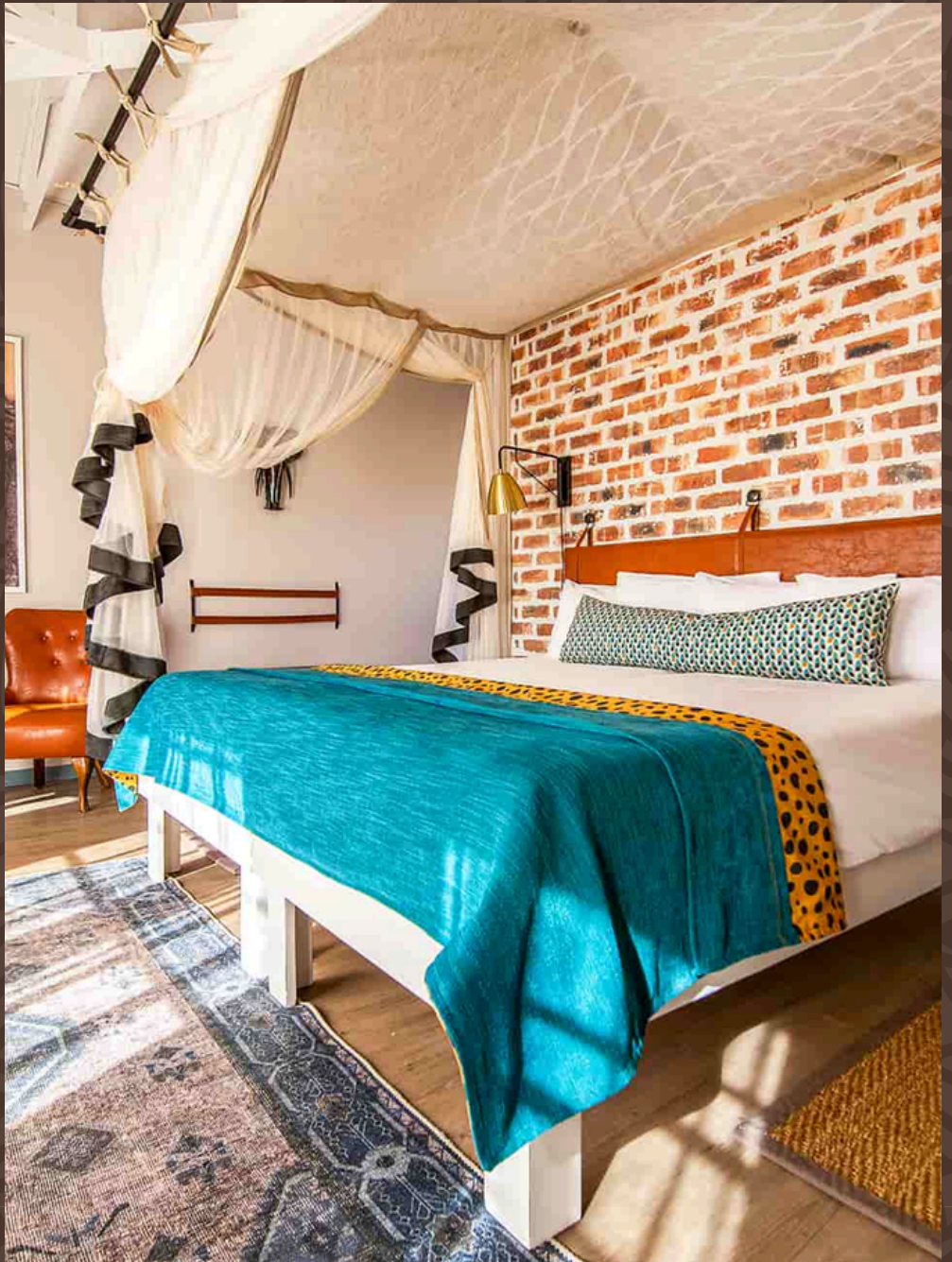
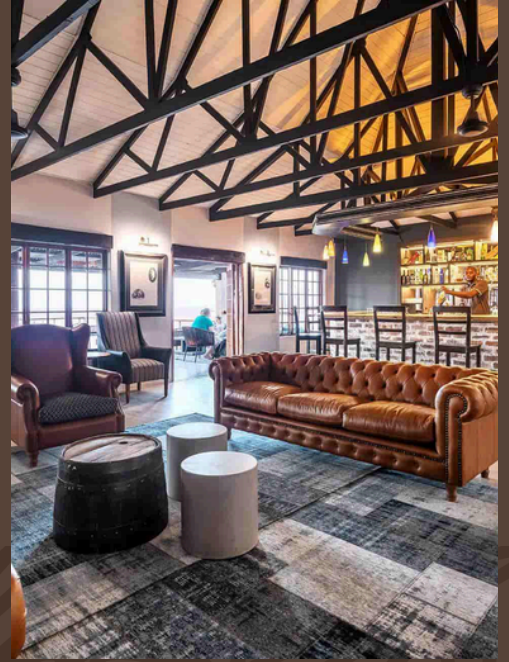


Please Like, Share & Follow



MO•AFRIKA
T O U R S

GONDWANA ETOSHA SAFARI LODGE



Condwana Etosha Safari Lodge is a stylish hilltop retreat located just 10 km south of Etosha National Park's Andersson Gate, offering sweeping views of the surrounding mopane woodland. The lodge features 65 air-conditioned chalets, each with a private veranda, en-suite bathroom, mosquito nets, and tea/coffee facilities. Guests can unwind at the restaurant, bar, or on the elevated sundowner deck, and enjoy three swimming pools set between the chalets. Guided game drives into Etosha are available, making it an ideal base for wildlife exploration.



VOTED NUMBER 1
TOUR OPERATOR
IN SA



2500+ REVIEWS



TERMS & CONDITIONS
APPLY



Please Like, Share & Follow



MO•AFRIKA
T O U R S



OKUTALA ETOSHA LODGE






Okutala Etosha Lodge is a family-friendly safari retreat located approximately 40 km south of Etosha National Park's Anderson Gate. Set on a 24,000-hectare private reserve, the lodge is dedicated to wildlife rehabilitation, offering guests close encounters with giraffes, elephants, and even mongoose, which may join you at breakfast. The lodge features 21 air-conditioned rooms, including family suites, each with a private patio and views of the surrounding landscape. Facilities include a restaurant, bar, swimming pool, and a lapa deck overlooking a waterhole frequented by wildlife. Activities range from guided game drives and hiking tours to animal feeding experiences and photography opportunities, making it an ideal base for exploring Etosha and its diverse fauna.



SAFARI BOOKINGS
COMPASS TOUR OPERATORS & SAFARI TOURS
★★★★★
VOTED NUMBER 1
TOUR OPERATOR
IN SA

2023
Travelers' Choice
Tripadvisor
★★★★★
2500+ REVIEWS


TERMS & CONDITIONS
APPLY

  
Please Like, Share & Follow



MO•AFRIKA
T O U R S



HOTEL A LA MER



Hotel A La Mer, a charming Swakopmund seaside hotel, is steps from the beach and jetty. It offers 46 en-suite rooms, some in a 1906 building, with sea-view balconies or terraces. Guests enjoy a breakfast buffet, free Wi-Fi, parking, and a cozy bar. The rooftop terrace boasts Atlantic and city views. Its central location makes restaurants, shops, and attractions easily accessible for exploring Swakopmund.



VOTED NUMBER 1
TOUR OPERATOR
IN SA



2500+ REVIEWS



TERMS & CONDITIONS
APPLY



Please Like, Share & Follow



MO•AFRIKA
T O U R S



TALENI DESERT CAMP



Taleni Desert Camp, 5 km from Sossusvlei and Sesriem Canyon, offers 28 eco-friendly, self-catering units with en-suite bathrooms, kitchenettes, and BBQ areas. Set in a private reserve, it features a pool, bar, and scenic desert views. Optional dining is available at nearby Sossusvlei Lodge. This affordable lodge is an ideal base for exploring the Namib Desert's stunning landscapes and iconic attractions.



VOTED NUMBER 1
TOUR OPERATOR
IN SA



2500+ REVIEWS



TERMS & CONDITIONS
APPLY



Please Like, Share & Follow



MO•AFRIKA
T O U R S

GONDWANA NAMIB DESERT LODGE



Gondwana Namib Desert Lodge, 60 km north of Sesriem, nestles beneath fossilised dunes. It offers 65 air-conditioned rooms with en-suite bathrooms and private verandas. Guests enjoy two pools, a restaurant, bar, and a waterhole attracting gemsbok and springbok. Activities include guided drives, hiking, and e-bike tours. For a unique experience, sleep at Dune Star Camp under the desert sky, with beds on wheels for stargazing.



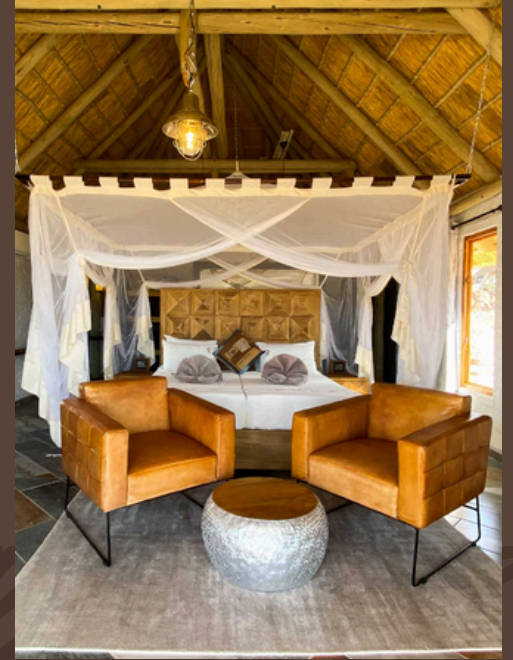

TERMS & CONDITIONS
APPLY



Please Like, Share & Follow



MO•AFRIKA
T O U R S



DESERT HOMESTEAD



Desert Homestead Lodge, 30 km from Sesriem, is a solar-powered retreat in a private reserve. It features 20 thatched chalets with en-suite bathrooms and private verandas. Guests can enjoy a pool, restaurant, and bar with desert views. Activities include horse riding, quad biking, and scenic flights, making it an ideal base for exploring Sossusvlei's stunning landscapes and experiencing the Namib Desert's unique beauty.




TERMS & CONDITIONS
APPLY



Please Like, Share & Follow